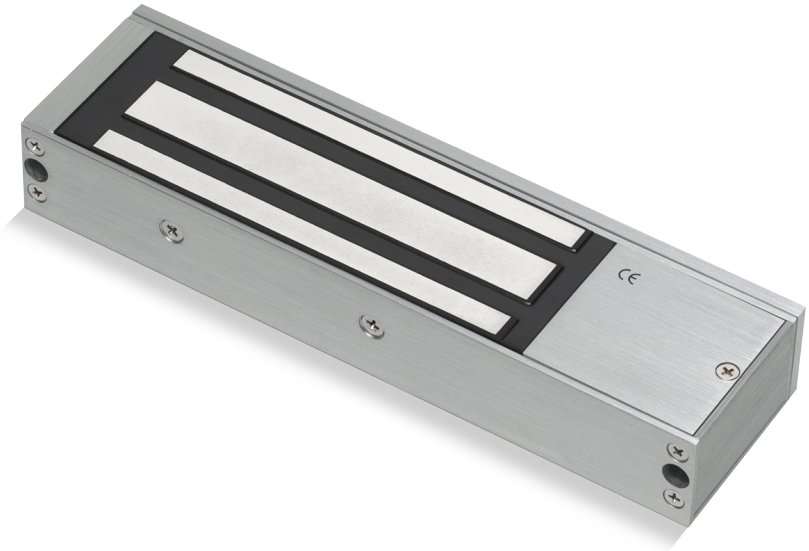
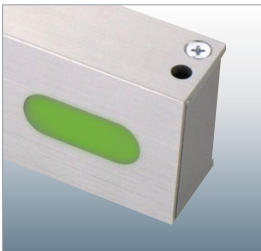


# GEM1200LD



## Standard Magnet

- Operating voltage 12~24Vdc
- Aluminium
- Fail-Safe (*Power to Lock*)
- Holding force up to 1200lbs (545Kg)
- Surface mount
- Status LED ● Red ● Green



### OPTIONS

500BP



520S



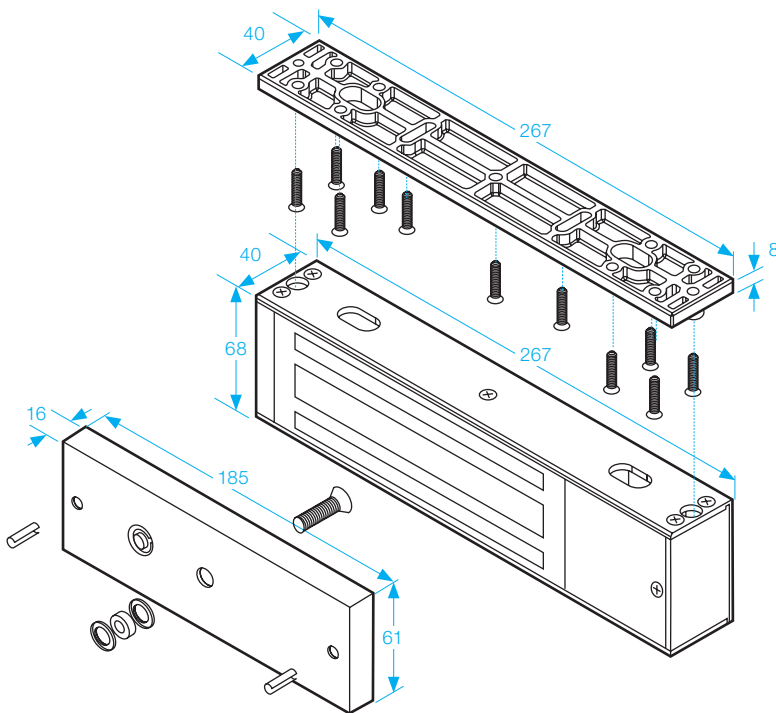
ZL-1200



L-1200



LD-SM-SC



#### VOLTAGE SELECTION JUMPERS

Check jumper settings before connecting the lock to 24VDC input power. Damage to the lock may result from incorrect jumper settings.



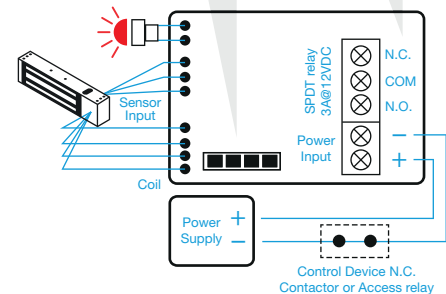
#### MAGNET BOND SENSOR OUTPUT

**N.C.**  
Output while door is unlocked;

**N.O.**  
Output while door is locked by the electromagnetic lock.

#### STATUS LED:

Green: Unlocked ●  
Red: Locked ●  
Off: No Power ○



### SPECIFICATION

- Voltage tolerance:  $\pm 15\%$ .
- Current draw: 500mA at 12Vdc, 250mA at 24Vdc (at temperature 20°C).
- Operating temperature: -10~55°C (14 to 131°F).
- Lock's surface temperature: Current temperature  $\pm 20\%$  (when power is on).
- Magnetic bond sensor monitor output remotely monitors the door lock or unlock status. (N.C. Output-door opened; N.O. Output-door closed) (SPDT rated 3A at 12Vdc).
- Humidity: 0~95% non-condensing.
- Special Zinc finish for magnet and armature plate.
- Weight: 5.0kg (approx).