

10020

Monitored Standard Magnet

- Operating voltage 12~24Vdc
- Aluminium
- Fail-Safe (*Power to Lock*)
- Holding force up to 1,200lbs (545Kg)
- Status LED ● Red ● Green



GEM®

TÜV | UL LISTED

OPTIONS

500BP



520S



500Z1



500ZLDC



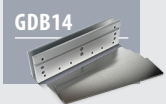
500AL



500CL



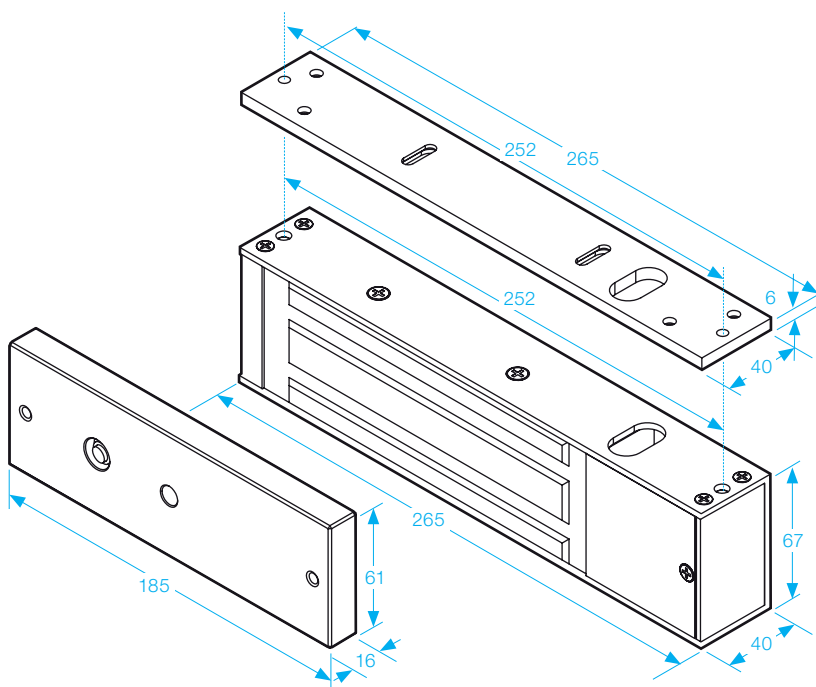
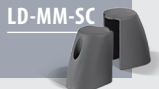
GDB14



10EXTP



LD-MM-SC



VOLTAGE SELECTION JUMPERS

Check jumper settings before connecting the lock to 24VDC input power. Damage to the lock may result from incorrect jumper settings.



12Vdc



24Vdc

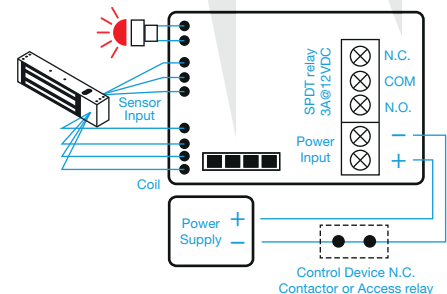
MAGNET BOND SENSOR OUTPUT

N.C.
Output while door is unlocked;

N.O.
Output while door is locked by the electromagnetic lock.

STATUS LED:

Green: Unlocked ●
Red: Locked ●
Off: No Power ○



SPECIFICATION

- Voltage tolerance: $\pm 15\%$.
- Current draw: 500mA at 12Vdc, 250mA at 24Vdc (at temperature 20°C).
- Operating temperature: -10~55°C (14 to 131°F).
- Lock's surface temperature: Current temperature $\pm 20\%$ (when power is on).

- Magnetic bond sensor monitor output remotely monitors the door lock or unlock status. (N.C. Output-Door opened; N.O. Output door closed) (SPDT rated 3A at 12Vdc).
- Humidity: 0~95% non-condensing.
- Special Zinc finish for magnet and armature plate.
- Weight: 5.0kg (approx).